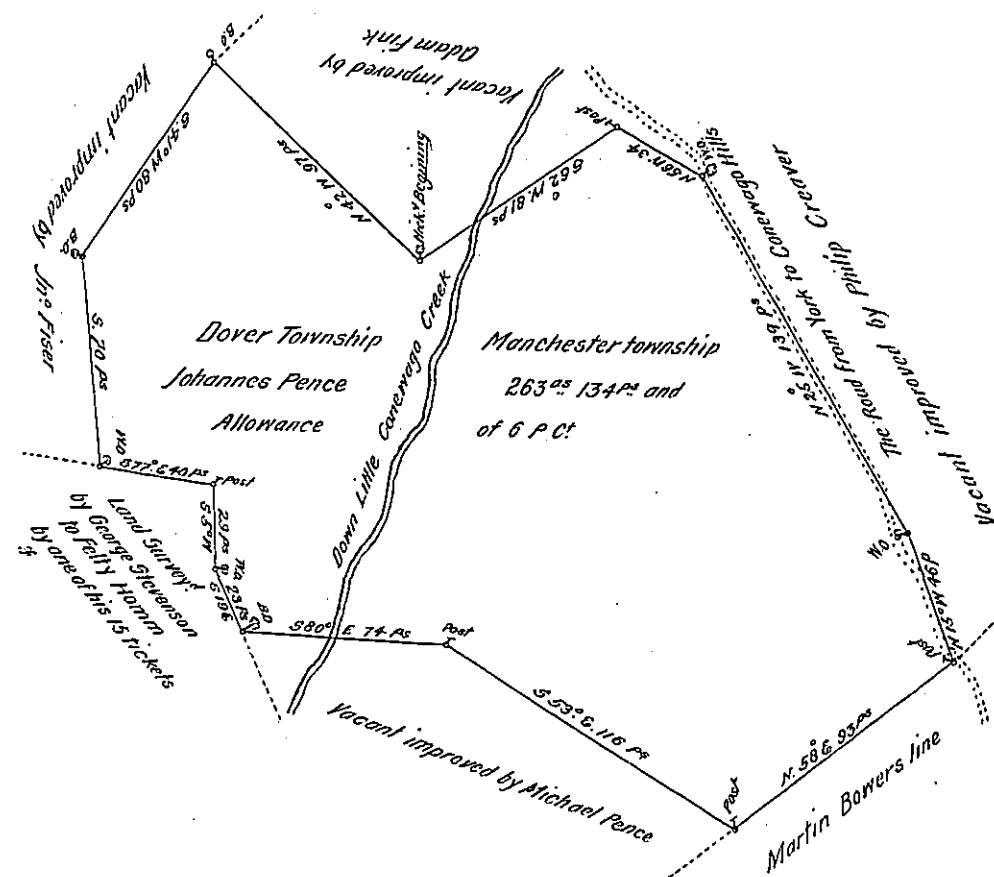


No	Course	Dist'	North ^o	South ^o	East ^o	West ^o
1-	N 42 W.	92.	72.1	—	—	64.9
2-	S 41 W.	80.	—	60.4	—	52.5
3-	S —	70.	—	70.	—	—
4-	S 77 E	40.	—	9.	39.	—
5-	S 5 W	29.	—	28.9	—	2.5
6-	S 19 E	23.	—	21.7	7.5	—
7-	S 80 E	74.	—	12.8	72.9	—
8-	S 53 E	116.	—	69.8	92.7	—
9-	N 58 E	93.	49.3	—	—	78.9
10-	N 15 W	46.	44.1	—	—	11.9
11-	N 25 W	139.	125.9	—	—	58.8
12-	N 56 W	37.	19.	—	—	28.2
13-	S 62 W	81.	—	38.	—	71.5



A Draught of a tract of Land situate part in Manchester and part in Dover township York County surveyed to Johannes Pence in Divisance of a Warrent from the Honourable Proprietaries for 150 ac^o bearing date the 22^d day of November 1749

By *Wm Matthews*

Surveyed the 25th day of the 4th mo 1765

To^o this land lies between 5 and 6 Hoile from York town

but is but Hoilding Land and very stony *Wm Matthews*

So *John Lukes* S. Gel.

IN TESTIMONY that the above is a copy of the original remaining on file in the Department of Internal Affairs of Pennsylvania, made conformably to an Act of Assembly approved the 16th day of February, 1833, I have hereunto set my Hand and caused the Seal of said Department to be affixed at Harrisburg, this

thirteenth day of August 1907

Henry Horvath
Secretary of Internal Affairs.